

# the anchor



TOGETHER TRANSFORMING PEOPLE INTO DEVOTED, PASSIONATE AMBASSADORS FOR CHRIST

## Welcome!

Sunday  
5 February 2012

Worship  
*Simon Love*

Adult Teaching  
*Andrew Stewart*

People are available to  
pray with/for you

### Partnering with



### Thought for



the Week

*Pastor Darryl Ward shares a thought of inspiration*

## Where does Jesus fit today?

This question has been asked time and time again from pulpits, small groups, discipleship meetings.....

Many Churches face the dilemma of placing Jesus in His rightful place while being relevant in the modern age. Consequently believers become confused as they struggle to live with one eye on Christ and one eye on the world. Lives are being torn apart as the commitment to the Gospel wanes, where self and individual rights take the primary position.

***Rev 5:6: And I looked, and behold, in the midst of the throne and of the four living creatures, and in the midst of the elders, stood a Lamb as though it had been slain, having seven horns and seven eyes, which are the seven Spirits of God sent out into all the earth.***

As we look at the passage from Revelation, it is important to note that the book derives its name from the words meaning "disclosure" or "unveiling". Therefore we see it is unveiling what otherwise could not be known or kept secret. Primary importance of this amazing scene belongs to Christ, the central figure in the picture. Note in the "midst" literally means in the middle. The very focus of the passage reveals that the centre of attention belongs to "The Lamb of God".

If you have been swayed by philosophy over the Bible, popular opinion over sound biblical principles and placed self in the centre of your world, then Christ has been moved to the outer. All of the wonderful pictures of Christ's majestic nature and authority as the only one worthy to open the scrolls, follows on from this verse. What is truly challenging for us today is the response of those depicted in verses 11 -14.

***Then I looked, and I heard the voice of many angels around the throne, the living creatures, and the elders; and the number of them was ten thousand times ten thousand, and thousands of thousands, saying with a loud voice: "Worthy is the Lamb who was slain to receive power and riches and wisdom, and strength and honour and glory and blessing!" And every creature which is in heaven and on the earth and under the earth and such as are in the sea, and all that are in them, I heard saying: "Blessing and honour and glory and power be to Him who sits on the throne, and to the Lamb, forever and ever!" Then the four living creatures said, "Amen!" and the twenty-four elders fell down and worshiped Him who lives forever and ever.***

Where does Jesus fit today?

## Words to live by

### Keep on praising

Psalm 119 : 164

"Seven times a day I will praise you for your righteous laws."

To maintain a joyful attitude, the Psalmist said "seven times a day I praise you". Try it.

### Pastoral care

Pastoral Care team members are available during the week for practical support, prayer or to talk to. First point of contact is Lynda Eves (ph 234 8279) or Jeanette Smyth (ph 233 9380) who will connect you with the person best suited to help you.

### Service roster (5 February)

Door host: Morris Smyth  
Welcome: Jeanette Smyth  
Communion: Scott & Keri Martin  
Morning tea: Phillip & Raewyn Larking

### Service roster (12 February)

Door : Stella Ward  
Welcome: Lynda Eves  
Communion: Steve & Lorna Rolston  
Morning tea: Alistair & Lynda Eves

### Sunday (12 February)

10am Adult teaching—Darryl Ward "The Insider"—Introduction to small groups series—overview of chapters 1-6  
10am Worship Leader— Alistair Eves

## Church news and activities

### Anchor Theology Cafe:

#### Quantum Leap

7—9pm Friday 10 February  
at The Anchor Church

Hosted by Sandy Leadbeater  
A night out for you, your family and friends. Enjoy some tea and coffee while listening to John Davies-Colley share about his journey into the mysteries of physics and the exquisitely intricate connection it has with God. This will blow your mind! John shared some of this with the mission team in Vanuatu and it was really cool. - Brad de Villiers

### Newcomer's Night

Friday 10 February 7.30pm

17 Navigation Drive, Whitby  
at the home of Lynda & Alistair Eves. If you are new to The Anchor, this is your opportunity to ask questions and find out

everything you want to know about The Anchor. Please let Lynda or Alistair know if you would like to attend - 234 8279.

### Car Rally

12.30pm Sunday 12 February

Leaving from The Anchor.  
A great afternoon for the whole family. Entry fee \$10 per car.

### Lemons in demand

If anyone has lemons they could donate to the Hall Family to help with fundraising efforts, that would be much appreciated. Please phone 2331123 or bring to church on Sunday. Thanks - Robyn Hall.



## What's on...

### Xtreme!

(High school youth—school terms)

Wednesdays: 7:30—9:30pm  
@ church

### Generation

(Youth 11-14 years—school terms)

Every other Monday 6—8pm at church.  
Free, but donations welcome. Email Ruth  
youth@theanchorchurch.org.nz

### Mainly Music

(Pre-schoolers—school terms)

Wednesdays 9:30am @ The Anchor  
Jenny Stevenson ph 235 6009

### Crossover

(High school youth—school terms)

Our community time; where we  
celebrate and have fun.

Saturdays 7—10pm. Email Brad at  
youth@theanchorchurch.org.nz

### Prayer Warriors

Do you have a prayer request?

Do you want to pray for others?

Email prayer@theanchorchurch.org.nz

(Subject line message: 'Add me in')

### Pastor Darryl Ward:

Day time: 234 1390 (Mon - Fri)

After hours: 238 4645

Mobile: 021 562 144

Email: darryl@theanchorchurch.org.nz

### Donations received

January total: \$13,240.55

Monthly aim: \$15-16,000

To give via internet banking please  
identify your deposit with your name  
or 'giving number'. (Alison has details)

### Bank account details

Bank - BNZ

Account name - The Anchor Church

General Account

Account - 02-0548-0382913-000

### Newsletter contributions

Please email to editor Tina Francis at  
wayneandtina@xtra.co.nz  
by 5pm Thursday evenings

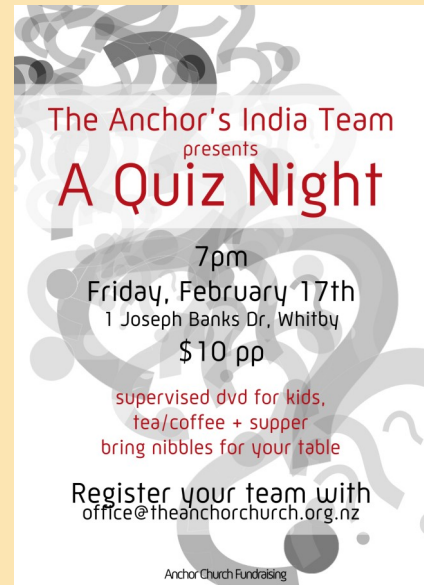
**Reserve your seat (or table) now!**

A fun evening and also raise some funds for the team going to India in April.

Sponsorship by Whittaker's Chocolates  
(more to come)  
Plus  
**Silent Auctions**

**A fantastic painting by Robyn Hall**  
**Awesome Prints by Evan McBride**  
**A family photo shoot by Glen Hetherington**

**Plus More**



**Can you help?**

We are aiming to assist Delhi Bible Institute set up a computer centre in Lucknow. We need sponsorship for:

- A Printer/Photocopier—\$500
- Set up/furniture/electrical work—\$500

If you can help with these let us know—talk to Geoff—233 9136

**PLUS COMING UP**

**“Kabi’s Curry” lunch on February 26th**

**“Tapa’s and Paella” cooking demonstration with Sarah Searancke Catering. March 7th**

In Spain dinner is traditionally served around ten o’clock. Tapas are small appetisers, served in bars, to alleviate hunger whilst waiting for dinner.

These small dishes were packed with flavour. Now bars around the world are adopting this style of eating and transforming it into an entire meal of small plates, shared amongst friends.

You will learn to create this social style of eating at home with an array of Spanish inspired dishes.



Book your place now as it is filling fast.

Starting Monday April 30th

“It is amazing and the best gift you can give yourself, your husband and your marriage. No matter where you are in your relationship you will gain a huge amount out of the course.”

Contact Kathryn—233 9136—or email [g.k.lawson@xtra.co.nz](mailto:g.k.lawson@xtra.co.nz)



**Anchor YOUTH CROSSOVER**

Check out [www.facebook.com/anchoryouth](http://www.facebook.com/anchoryouth) to keep up to date with all the Anchor Youth news and events.

**TERM 1 / SATURDAY NIGHTS / 7:00 - 10:00 / FRIENDS, FUN & FAITH**

<b>4 FEB</b> STRIKE BOWLING! \$12 for 1 game. \$20 for 2.	<b>11 FEB</b> BENCH RUN Gold Coin Donation.	<b>18 FEB</b> WILD WATER NIGHT Gold Coin Donation.
<b>25 FEB</b> MINI GOLF School Student \$10. Uni Student \$11. Adult \$12.	<b>3 MAR</b> TOUCH TOURNY & sleep over in Masterton. \$15 for entry/petrol. Bring \$ for food.	<b>10 MAR</b> SOCIAL SERVICE Cooking Freezer Meals. Bring \$5 for ingredients.
<b>17 MAR</b> PROGRESSIVE DINNER Last week we cooked this week we eat. Free!	<b>24 MAR</b> CHURCH CAMP 23-25 March. Youth Activities Saturday Night.	<b>31 MAR</b> 40hr FAMINE Sleep over & disability walk. Bring \$ for dinner.

**THE ANCHOR CHURCH - 1 JOSEPH BANKS DRIVE WHITBY - YOUTH@THEANCHORCHURCH.ORG.NZ**

## The Anchor youth scene

Crossover is now underway on Saturday nights for term 1, with heaps of great activities planned. The Anchor has awesome programmes for kids and youth of all ages, including Mainly Music, Generation and Xtreme, due to start again soon. Please see the information panel on page 2 or email Brad and Ruth de Villiers at [youth@theanchorchurch.org.nz](mailto:youth@theanchorchurch.org.nz)

As we approach the start of "The Insider" Church study series commencing on 12 February, there are a few important issues for you to know.

All book orders have been placed and are due to arrive prior to the commencement of the study. If you would like to begin reading now, go to "Google Books" on the Google browser and type in "The Insider Navpress". You can start reading online.

If you are not in a small group or would like additional information, please see Raymond Neal, Terry Neal or Darryl Ward.

The first sermon on 12 February will provide an overview of the first 6 chapters of the book. A brief outline of each sermon will be provided on the day of the sermon. In order to be in sync for camp, the first six chapters should be studied in one session.

Information for each small group will be available from the foyer on Sunday.

